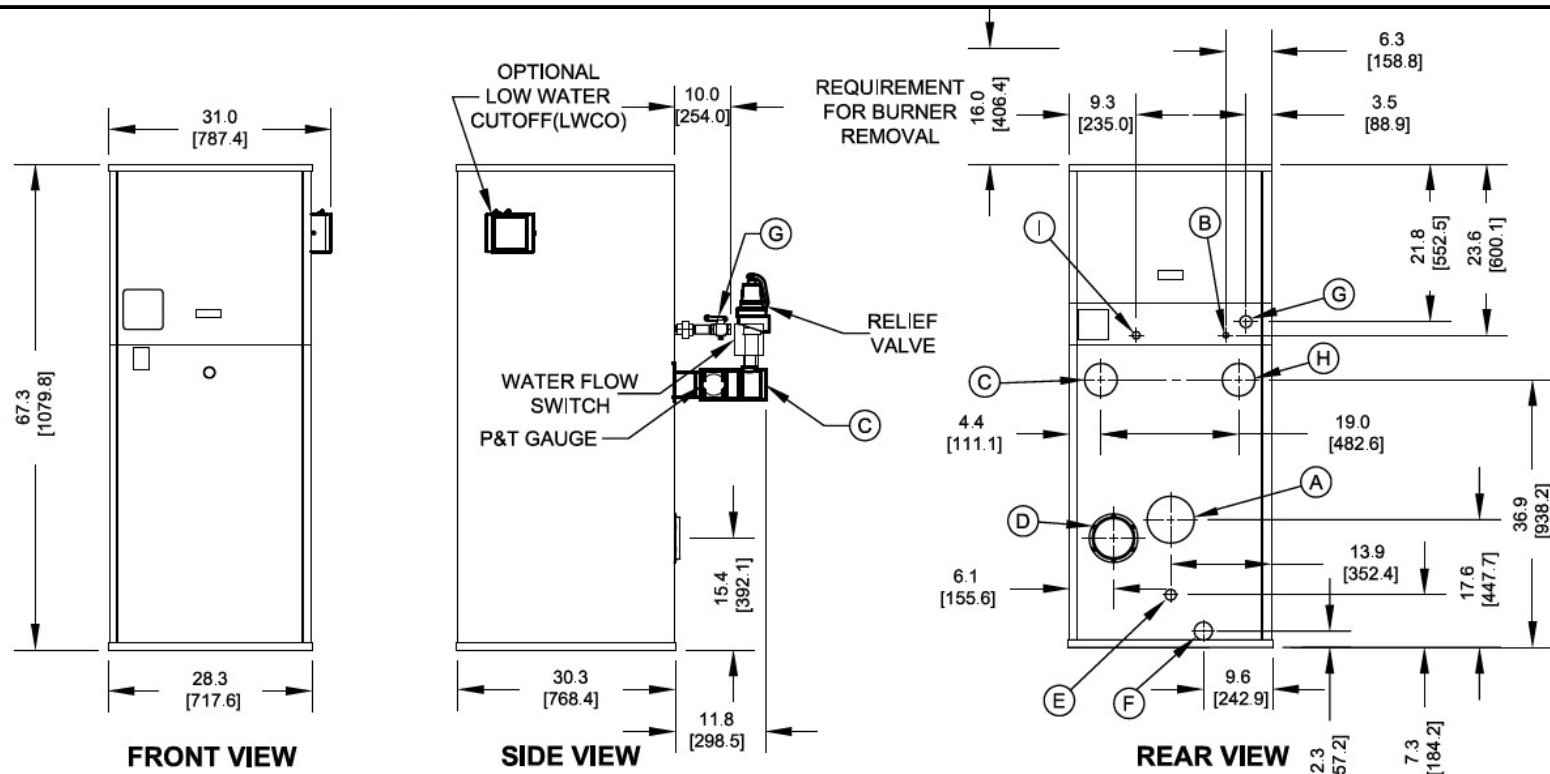


Submittal Data Sheet



KEY	DESCRIPTION	
A	Flue Outlet	6" [152.4] Diameter (AL29-4C SS)
B	Factory Installed Pilot Gas Lin	1/4" [6/4] O.D. Tube
C	Water Supply to System	3" NPT
D	Inlet Air	6" [152.4] Diameter
E	Drain, Startup Condensate	5/8" [15.9] O.D. Tube SS
F	Appliance Drain	1" NPT
G	Gas Supply	1 1/2" NPT
H	Water Return from System	3" NPT
I	Optional Gas Train Vent	3/4" NPT (D.B.&B & D.B.&B w/ POC Only)

NOTES:

1. SEE O&M FOR REQUIRED INSTALLATION CLEARANCES.
2. DIMENSIONS SHOWN ARE FOR REFERENCE ONLY.
3. DIMENSIONS ENCLOSED IN [] ARE IN MM.

Submittal Data Sheet

RATINGS AND CAPACITIES

Input (MBH):	1,000,000	BTU/HR
Output (MBH):	850,000	BTU/HR
Boiler Horsepower:	25.4	BTU/HR
Thermal Efficiency:	85.0%	BHP
Heating Surface:	175	Sq.Ft.
Water Content:	16.4	Gallons
Fuel:	Natural Gas or LP Gas	
Firing Rate:	Reliable Modulation	
Burner Turndown:	3:1	
Low NOx Emissions:	<10 ppm	
Inlet Gas Pressure (NG):	See Chart at right	
Inlet Gas Pressure (LP):	See Chart at right	

* This data supercedes data found on Table 3 of I&O Manual, per PRODUCT UPDATE issued June 6, 2024.

Shipping Weight, Approximate: **1,185** lbs

ASME Section IV (Max 160 PSIG / 250°F)

Setpoint range is 145-230°F

Adjustable, manual reset high limit setting of ≤ 240°F.

ASME H stamp MAWT is 250°F for the vessel. (For max setpoint, see Setpoint range.)

UL Certified to ANSI Z21.13 / CSA 4.9

UL Certified to UL 795 / CSA 3.1



FLOWS AND PRESSURE DROPS

Delta T	Flow (GPM)	ΔP (Ft. Hd)
20°F ΔT	82 (Max)	3.24
40°F ΔT	41 (Min)	0.81

Electrical Supply Options

<input type="checkbox"/>	120v/60hz/1ph (Standard)	7.5 amps
<input type="checkbox"/>	208v/60hz/1ph	6.6 amps
<input type="checkbox"/>	230v/60hz/1ph	6.4 amps
<input type="checkbox"/>	208v/60hz/3ph	6.0 amps
<input type="checkbox"/>	230v/60hz/3ph	6.0 amps
<input type="checkbox"/>	460v/60hz/3ph	3.0 amps

Blower Motor (hp)

1-1/2

Relief Valve Options

<input type="checkbox"/>	30 psi	<input type="checkbox"/>	50 psi	<input type="checkbox"/>	60 psi
<input type="checkbox"/>	75 psk	<input type="checkbox"/>	100 psi	<input type="checkbox"/>	125 psi
<input type="checkbox"/>	150 psi				

DIMENSIONS / CONNECTIONS

Height:	67 3/8"	(Note 1)
Width:	28 3/8"	(Note 2)
Length:	30 3/8"	(Note 3)
Supply Connection:	3"	
Return Connection:	3"	
Vent / Air Intake Connections:	6" Vent	6" Intake
Condensate / Appliance Drain Connection:	5/8" Condensate Tube	1" NPT Drain
Gas Connection:	1 1/2"	

NOTES:

1. Height dimension is from floor to top of jacket.

2. Length is from jacket front to jacket rear.

3. Dimensions shown are for reference only

Inlet Gas Pressure

SIZE	Nat. Gas Min. ("w.c.)	LP Min. ("w.c.)	Max
500	5.0" w.c.	8.0" w.c.	14.0" w.c.
750	7.0" w.c.*		
1000	7.0" w.c.*		
1500	7.0" w.c.*		
2000	9.0" w.c.*	9.0" w.c.	
2000s	7.0" w.c.	8.0	
2500	6.0" w.c.		
3000	6.0" w.c		

* NOTE: Optional natural gas train with 4" w.c. minimum inlet gas pressure
ONLY AVAILABLE on sizes 750, 1000, 1500 & 2000.

Submittal Data Sheet

STANDARD EQUIPMENT		OPTIONAL EQUIPMENT												
<div style="background-color: #cccccc; text-align: center; font-weight: bold; margin-bottom: 5px;">PRESSURE VESSEL DESIGN</div> <p>Copper Fin-tube construction Carbon steel or cast iron header design Gasketless heat exchanger ASME Section IV certified "H" stamp MAWP 160 PSI & max design temp 250°F 5-year heat exchanger warranty 20-year thermal shock warranty</p>	<div style="background-color: #cccccc; text-align: center; font-weight: bold; margin-bottom: 5px;">BOILER EQUIPMENT</div> <p>Siemens RWF55 operating control High limit w/ manual reset safety temperature control Water flow switch Low water cut-off with manual reset safety controller Outlet temperature sensor Combustion air switch Pressure and temperature gauge Safety relief valve (Optional pressure 30 - 150 PSI; See details above.) Single point electrical supply: (Available in: 1 and 3 phase options. See details above.)</p>	<div style="background-color: #cccccc; text-align: center; font-weight: bold; margin-bottom: 5px;">BURNER EQUIPMENT</div> <p>UL/FM/CSD-1 gas train Reliable Turndown Natural or LP gas Pilot gas valve / Pilot gas regulator Siemens SKP-75 gas valve Low and high gas pressure switches with manual reset</p>												
<div style="background-color: #cccccc; text-align: center; font-weight: bold; margin-bottom: 5px;">COMBUSTION DESIGN</div> <p>Maintenance-free ceramic burner Ultra-low NOx emissions (<10ppm) Whisper quiet operation (<50 dBA) Easy to service, 99% efficient industrial air filter Industrial cast aluminum blower assembly VFD Driven Blower Reliable electric spark-to-pilot ignition 10-year burner warranty Honeywell UV-Scanner</p>	<div style="background-color: #cccccc; text-align: center; font-weight: bold; margin-bottom: 5px;">SIEMENS RWF55 OPERATING CONTROL FEATURES</div> <p>Adjustable set point Remote set point (0-10v or 4-20 mA) Outdoor air temperature reset</p>	<div style="background-color: #cccccc; text-align: center; font-weight: bold; margin-bottom: 5px;">OPTIONAL EQUIPMENT</div> <p><input type="checkbox"/> Low gas pressure venturi, 4" wc (AVAILABLE ONLY on Models 750-2000) [FACTORY INSTALLED OPTION ONLY]</p> <p><input type="checkbox"/> Line Reactor Adds voltage / spike protection for the blower's VFD. (<i>Highly recommended for areas with dirty voltage.</i>)</p> <p><input type="checkbox"/> Honeywell 7800 Series display with ModBus Module Line Reactor Adds voltage / spike protection for the blower's VFD. (<i>Highly recommended for areas with dirty voltage.</i>)</p> <p><input type="checkbox"/> Outdoor Air Sensor</p> <p><input type="checkbox"/> Condensate neutralizer:</p> <div style="display: flex; justify-content: space-between;"> <input type="checkbox"/> 850 MBH <input type="checkbox"/> 1,200 MBH </div> <div style="display: flex; justify-content: space-between;"> <input type="checkbox"/> 2,000 MBH <input type="checkbox"/> 5,000 MBH </div> <p><input type="checkbox"/> Pump Kit (Boiler Circulation Pump, Pump Flange Kit Sized based on a 20°F Delta T)</p> <p><input type="checkbox"/> Annual Maintenance Kit</p> <p><input type="checkbox"/> System Temperature Sensor</p> <p><input type="checkbox"/> ModBus RS485 communication for Siemens RWF55 and Honeywell Flame Safeguard Control (Boiler to BMS)</p> <p><input type="checkbox"/> Universal comms. gateway (BACnet MS/TP, BACnet/IP, N2, Modbus TCP)</p> <p><input type="checkbox"/> Local / remote switch</p> <p><input type="checkbox"/> Alarm bell with silencing switch</p> <p><input type="checkbox"/> Relays: <input type="checkbox"/> General Alarm <input type="checkbox"/> Boiler Status</p> <p><input type="checkbox"/> Conductor Sequencing Panel: Req. for multiple EVA applications without BMS. Contact your RSM with Questions.)</p> <p>The Conductor Sequencing Panel manages multiple condensing & non-condensing, small & large heat output, new and/or existing boilers (full modulation), and steam or hot water applications. It helps improve system efficiency by selecting and modulating the right boiler to match operating conditions. The Conductor offers a single point boiler plant Energy Management System (EMS) interface including Modbus TCP/IP, Modbus RTU RS485, BACnet/IP and BACnet MSTP standard. If Lonworks needed, add for the separate Lonworks gateway.</p>												
<div style="background-color: #cccccc; text-align: center; font-weight: bold; margin-bottom: 5px;">VENTING</div> <p>Sealed or room air combustion Direct vent (sidewall or vertical) (Cat IV) Conventional venting (Cat II) <i>NOTE: This is NOT a Cat 1 Vent appliance.</i></p>		<div style="background-color: #cccccc; text-align: center; font-weight: bold; margin-bottom: 5px;">Extended Warranty Options Available:</div> <table style="width: 100%; border-collapse: collapse;"> <thead> <tr> <th style="width: 30%;"></th> <th style="width: 20%; text-align: center;"><u>3-Year</u></th> <th style="width: 20%; text-align: center;"><u>5-Year</u></th> <th style="width: 30%; text-align: center;"><u>10 Year</u></th> </tr> </thead> <tbody> <tr> <td style="text-align: center;"><u>Parts Only</u></td> <td style="text-align: center;"><input type="checkbox"/></td> <td style="text-align: center;"><input type="checkbox"/></td> <td style="text-align: center;"><input type="checkbox"/></td> </tr> <tr> <td style="text-align: center;"><u>Parts and Labor</u></td> <td style="text-align: center;">N/A</td> <td style="text-align: center;"><input type="checkbox"/></td> <td style="text-align: center;"><input type="checkbox"/></td> </tr> </tbody> </table>		<u>3-Year</u>	<u>5-Year</u>	<u>10 Year</u>	<u>Parts Only</u>	<input type="checkbox"/>	<input type="checkbox"/>	<input type="checkbox"/>	<u>Parts and Labor</u>	N/A	<input type="checkbox"/>	<input type="checkbox"/>
	<u>3-Year</u>	<u>5-Year</u>	<u>10 Year</u>											
<u>Parts Only</u>	<input type="checkbox"/>	<input type="checkbox"/>	<input type="checkbox"/>											
<u>Parts and Labor</u>	N/A	<input type="checkbox"/>	<input type="checkbox"/>											